

MOORPARK COMMERCE CENTER
5140-5148 COMMERCE AVE.,
MOORPARK, CA 93021

INDUSTRIAL FOR LEASE



GRANT FULKERSON, SIOR

PRINCIPAL
818.304.4956
GFULKERSON@LEE-RE.COM
WWW.FULKERSON-RE.COM
DRE# 01483890

ERICA BALIN

PRINCIPAL/MANAGING DIRECTOR
818.444.4912
EBALIN@LEE-RE.COM
WWW.ERICABALINCRE.COM
DRE# 01481476

BRYCE KOLB

ASSOCIATE
818.497.3866
BKOLB@LEE-RE.COM
DRE# 02240862

Professionally managed by:

Dolphin Partners, Inc.



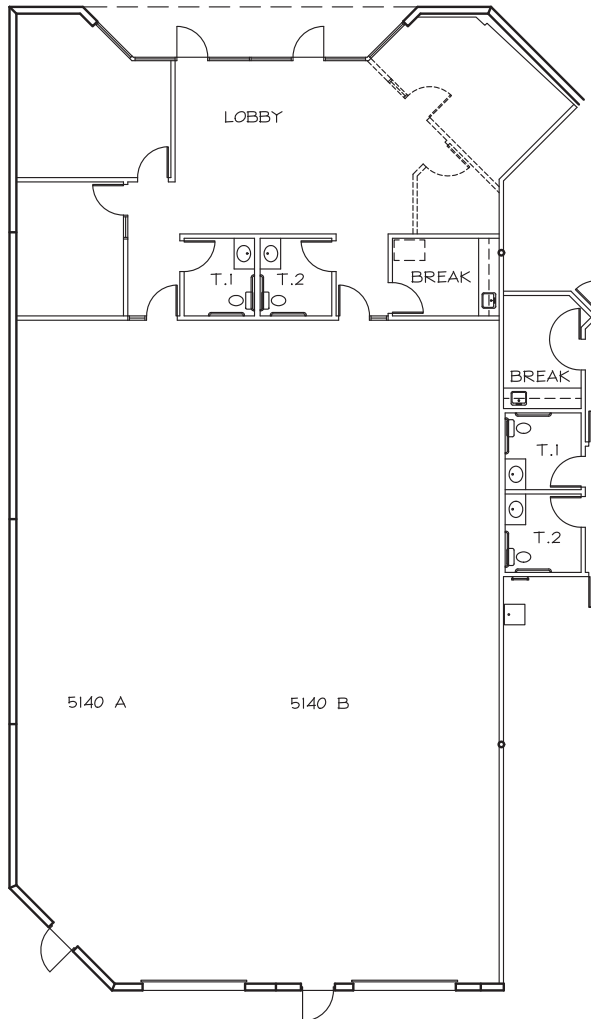
**LEE &
ASSOCIATES**

COMMERCIAL REAL ESTATE SERVICES

PROPERTY INFORMATION

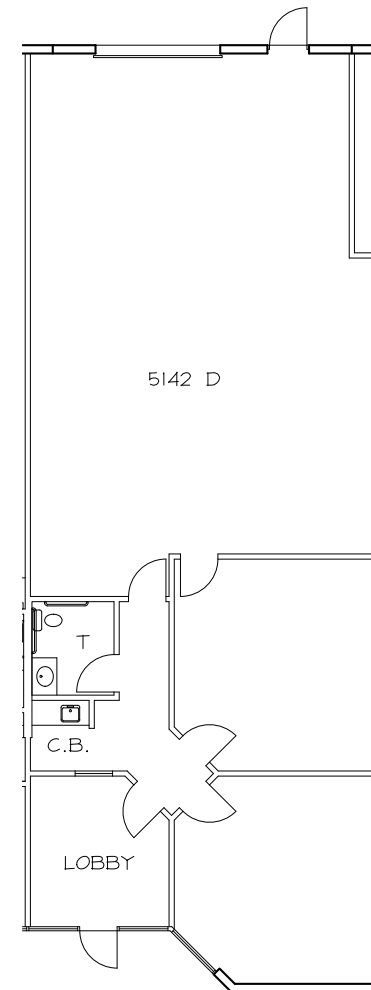
5140 Commerce Ave | Unit A

TOTAL SF	4,702 SF
LOADING	2 Ground Level
CLEAR HEIGHT	16 Feet
POWER	400 Amps / 120-208 V
LEASE RATE	\$1.40 PSF MG
CAM	\$0.05 PSF
AVAILABLE	Immediately



5142 Commerce Ave | Unit D

TOTAL SF	2,118 SF
LOADING	1 Ground Level
CLEAR HEIGHT	16 Feet
POWER	200 Amps / 120-208 V
LEASE RATE	\$1.40 PSF MG
CAM	\$0.05 PSF
AVAILABLE	Immediately





PROFESSIONAL
BUSINESS PARK
ENVIRONMENT



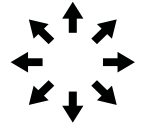
PRISTINE
COMMON
AREAS



IMMEDIATE ACCESS
TO HIGHWAY 118



PROFESSIONALLY
OWNED & MANAGED



OPPORTUNITY
FOR EXPANSION
WITHIN THE PARK





MOORPARK COMMERCE CENTER MOORPARK, CA

GRANT FULKERSON, SIOR

PRINCIPAL
818.304.4956
GFULKERSON@LEE-RE.COM
WWW.FULKERSON-RE.COM
DRE# 01483890

ERICA BALIN

PRINCIPAL/MANAGING DIRECTOR
818.444.4912
EBALIN@LEE-RE.COM
WWW.ERICABALINCRE.COM
DRE# 01481476

BRYCE KOLB

ASSOCIATE
818.497.3866
BKOLB@LEE-RE.COM
DRE# 02240862

