

# FOR LEASE | CALABASAS, CA



SCOTT CASWELL, SIOR  
Principal  
818.266.7772  
scaswell@lee-re.com  
DRE# 00853607

ERICA BALIN  
Principal/Managing Director  
818.444.4912  
ebalin@lee-re.com  
DRE# 01481476

 **LEE &  
ASSOCIATES**  
COMMERCIAL REAL ESTATE SERVICES

# FOR LEASE | CALABASAS, CA

## AERIAL OVERVIEW



SCOTT CASWELL, SIOR  
Principal  
818.266.7772  
scaswell@lee-re.com  
DRE# 00853607

ERICA BALIN  
Principal/Managing Director  
818.444.4912  
ebalin@lee-re.com  
DRE# 01481476

 **LEE &  
ASSOCIATES**  
COMMERCIAL REAL ESTATE SERVICES

# FOR LEASE | CALABASAS, CA

## SITE PLAN



CRAFTSMAN CIRCLE / CALABASAS INVESTMENT GROUP SITE PLAN  
3/11/2024 N.T.S.



SCOTT CASWELL, SIOR  
Principal  
818.266.7772  
scaswell@lee-re.com  
DRE# 00853607

ERICA BALIN  
Principal/Managing Director  
818.444.4912  
ebalin@lee-re.com  
DRE# 01481476

 **LEE &  
ASSOCIATES**  
COMMERCIAL REAL ESTATE SERVICES

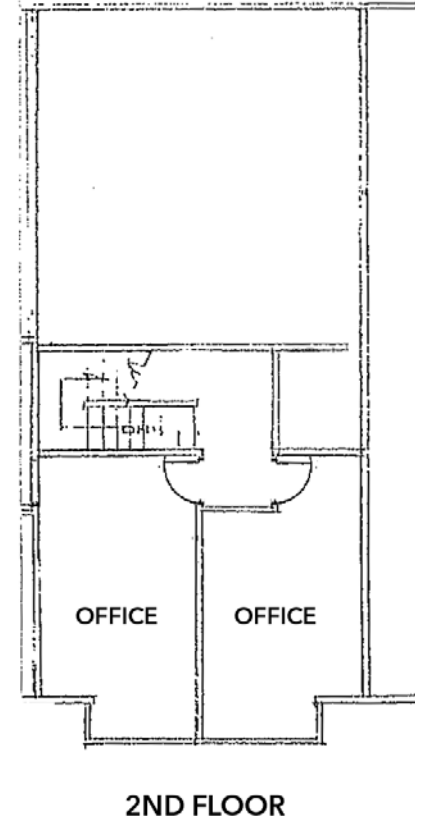
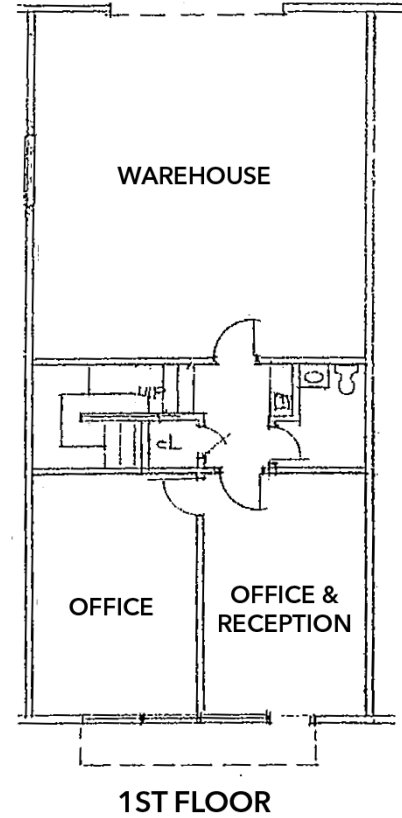
# FOR LEASE | CALABASAS, CA

5115 DOUGLAS FIR RD., UNIT F

## PROPERTY DETAILS

**Total SF:** 1,700 Square Feet  
**Loading:** Rear-Roll Up Door  
**Clear Height:** 14 Feet  
**Lease Rate:** \$3,825 MG/Month  
**Available:** Now

**Highlights:** Beautiful Garden Entry  
Gorgeous Views from Office  
High End Industrial Park  
Immediate 101 Freeway Access  
L.A. City Gross Receipts Savings



Not to Scale

**SCOTT CASWELL, SIOR**  
Principal  
818.266.7772  
scaswell@lee-re.com  
DRE# 00853607

**ERICA BALIN**  
Principal/Managing Director  
818.444.4912  
ebalin@lee-re.com  
DRE# 01481476

 **LEE &  
ASSOCIATES**  
COMMERCIAL REAL ESTATE SERVICES

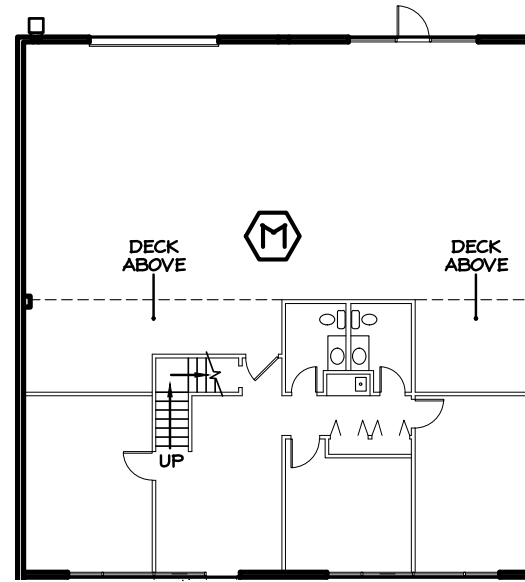
# FOR LEASE | CALABASAS, CA

5115 DOUGLAS FIR RD., UNIT M

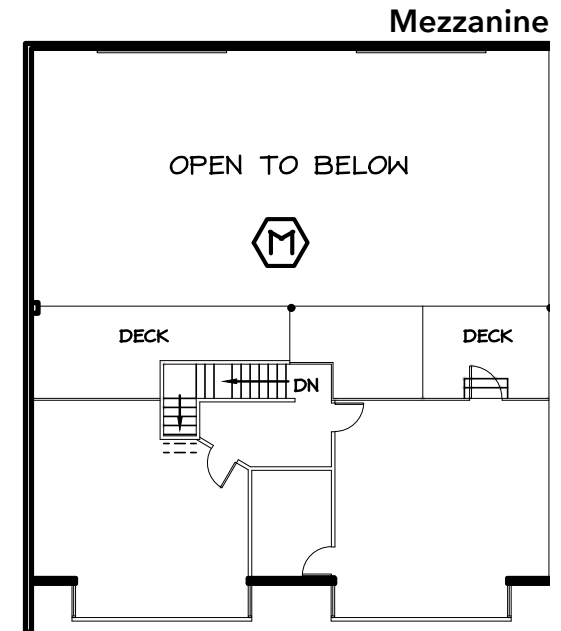
## PROPERTY DETAILS

**Total SF:** 3,400 Square Feet  
**Loading:** 2 Rear-Roll Up Door  
**Clear Height:** 12 Feet  
**Lease Rate:** \$7,650 MG/Month  
**Available:** Now

**Highlights:** Beautiful Garden Entry  
Gorgeous Views from Office  
High End Industrial Park  
Immediate 101 Freeway Access  
L.A. City Gross Receipts Savings



1st Floor



Not to Scale



**SCOTT CASWELL, SIOR**  
Principal  
818.266.7772  
scaswell@lee-re.com  
DRE# 00853607

**ERICA BALIN**  
Principal/Managing Director  
818.444.4912  
ebalin@lee-re.com  
DRE# 01481476

# FOR LEASE | CALABASAS, CA

## AMENITIES



SCOTT CASWELL, SIOR  
Principal  
818.266.7772  
scaswell@lee-re.com  
DRE# 00853607

ERICA BALIN  
Principal/Managing Director  
818.444.4912  
ebalin@lee-re.com  
DRE# 01481476

**LEE & ASSOCIATES**  
COMMERCIAL REAL ESTATE SERVICES